

ECUADOR - SOUTHERN ISLANDS CRUISE | CALIPSO



INTRODUCTION

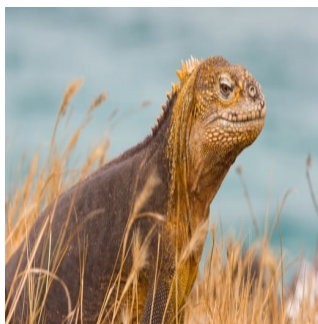
The recently refurbished M/Y Calipso is a unique way to explore the Galapagos that combines comfort and expedition. This 4-day cruise will take you through the beautiful and pristine waters of Floreana island, the Santa Cruz islands and San Cristobal. Enjoy amazing postcard views, dive into crystal blue waters and catch a glimpse of some of the most unique wildlife in all the world.

Check out the other itineraries onboard Calipso: [8 Day Cruise](#), [5 Day Western Islands Cruise](#)

ITINERARY

DAY 1: Monday, Arrival Baltra & South Plaza Island

Morning flight from Quito or Guayaquil to Baltra, Galapagos Islands. You will arrive at Baltra Island in the morning. After passing through immigration and baggage claim, you will be met by a Calipso staff member and transferred to the yacht. You will be shown to your cabin where you will have some time to settle in before lunch and a welcome briefing. In the afternoon, visit South Plaza Island. This small island with steep cliffs was formed by rising lava and is now covered by Opuntia cacti. It is also home to one of the largest sea lion colonies as well as colourful yellow and red land iguanas. The most characteristic plant is the Sesuvium. During the rainy season its colour is a greenish to yellowish tone and in the dry season (end of June through January) a bright red.



TRIP CODE

ECGGC4D

DEPARTURE

Selected Mondays

DURATION

4 Days

LOCATIONS

Ecuador, Galapagos Islands, South America



ECUADOR - SOUTHERN ISLANDS CRUISE | CALIPSO

DAY 2: Floreana Island

You will land on a beach and head to a spot where 18th century whalers placed a wooden barrel used as an unofficial mail box, Post Office Bay. The custom continues to this day with Galapagos visitors. So, don't forget your postcards, and don't be surprised if the post card arrives to its destination before you even get home! Baroness Viewing Point is a fantastic place to absorb the environment of the Galapagos. Once inhabited by an indulgent baroness and her three lovers, the history of this island is intriguing. The legends about this baroness are associated with a fascinating murder mystery. There are easy trails in this area for exploring the flora and fauna of Floreana. In the afternoon, enjoy the sights of Cormorant Point, a point that hosts a large flamingo lagoon. It is here that other birds such as common stilts and white-cheeked pintails can also be see. The beaches on this island are distinct: The Green Beach is named so due to its green colour, which comes from a high percentage of olivine crystals in the sand, and the Four Sand Beach is composed of white coral.



DAY 3: Wednesday, Santa Fe and Santa Cruz Island

Santa Fe Island (Barrington) is home to the small picturesque bay and anchorage on the island's northeast coast. The bay has two visitor trails: one leading to a scenic viewpoint atop a cliff, and the other spanning from a small beach to a tall prickly cactus forest. Later that day, you will visit "Fausto Llerena", Giant Tortoises Breeding Center in Puerto Ayora, Santa Cruz Island, where giant tortoises are bred in captivity; this is home to tortoises ranging from 3-inches (new hatchlings) to 4-feet long adults. Subspecies of the giant tortoises interact with one another, and many of the older tortoises are accustomed to humans stretching out their heads for a photo opportunity. The babies are kept until they are about four years-old and strong enough to survive on their own.



TRIP CODE

ECGGC4D

DEPARTURE

Selected Mondays

DURATION

4 Days

LOCATIONS

Ecuador, Galapagos Islands, South America



ECUADOR - SOUTHERN ISLANDS CRUISE | CALIPSO

DAY 4: San Cristobal Island & Departure

You will visit Gianni Arismendy Interpretation center, part of an environmental project. The tour of this center will explore the natural history of the islands including human interaction and conservation efforts. The Museum of Natural History explains the volcanic origin of the archipelago, ocean currents, climate, and the arrival of endemic species. The Human History exhibit chronologically describes significant events such as discovery and colonization of the islands. After this final visit, you will be transferred to the San Cristobal airport in time for your flight back to the mainland.



TRIP CODE

ECGGC4D

DEPARTURE

Selected Mondays

DURATION

4 Days

LOCATIONS

Ecuador, Galapagos Islands, South America



INCLUSIONS & DETAILS

Accommodation	Cabin on board ship
Inclusions	<div> INCLUSIONS All meals onboard the ship Transfers in the islands Twice daily excursions Bilingual National Park Guide on all excursions Use of snorkelling equipment/wetsuit Use of underwater camera Free Airport Assistance* Hotel night in Quito or Guayaquil (the day before the cruise)* 1 Free transfer to Galapagos Flights* *Applies when purchasing airfare through ship operator </div> <div> EXCLUSIONS Roundtrip airfare to/from Galapagos Alcoholic and other non included drinks Galapagos National Park Entrance Fee (US\$200 per person from Aug 2024 - Subject to change) Galapagos Transit Control Card (USD\$20 per person - Subject to change) Travel/Medical insurance Gratuities Personal Expenses Visas and other related expenses </div>
Difficulty Rating	2 (Light adventure)

ECUADOR - SOUTHERN ISLANDS CRUISE | CALIPSO

Single Surcharge	A single supplement surcharge applies and is subject to availability. Please contact us for more information.
Notes	All entrance fees are subject to change without prior notice. Itinerary is subject to change depending on weather conditions and government regulations.
Price Dependent upon	Seasonality, fuel surcharges, currency fluctuations and availability at time of booking.

SUSTAINABILITY

Chimu Adventures undertakes a number of sustainability measures within its operations including:

- 1) Only using local guides and office staff to both maximise local employment opportunities and minimise carbon footprints. Local guides also ensure you benefit from the intimate knowledge, passion and culture of the country you’re visiting.
- 2) Where possible, using locally owned and operated boutique hotels to maximise the return to the local community.
- 3) Chimu’s “Pass it on” programme has provided funding to hundreds of local community projects in Latin America. Our aim is to empower local communities, helping them to develop their own infrastructure for the future. Since 2006, we have been working with Kiva (a well-known Non-Governmental Organisation), providing hundreds of loans to local businesses all over South America.
- 4) In our pre tour information we provide a range of tips and advice on how to minimise your impact on both local environments and communities.
- 5) Chimu Adventures’ offices also take a number of sustainability measures including carbon offsets for company vehicles and most staff travel. Chimu Adventure’s internal processes are also structures to create a paperless office and to reduce waste. There are also internal programmes to help staff minimise their carbon footprint such as our staff bike purchase assistance plan which encourages office staff to commute to work via bicycle. Currently almost half of our office based staff commute to work via bicycle.

TRIP CODE
ECGGC4D
DEPARTURE
Selected Mondays
DURATION
4 Days
LOCATIONS
Ecuador, Galapagos Islands, South America
