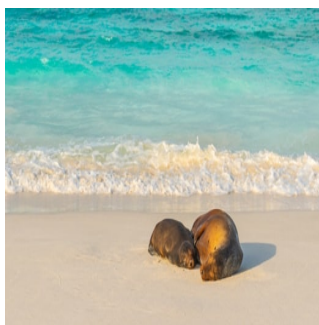


Explore the southern and central islands of the Galapagos on this 5 day expedition cruise onboard the first class ship, Galapagos Angel to explore this amazing Archipleigo. This premium motor yacht is built to take just 16 passengers. You will enjoy a mix of hiking, wildlife spotting and snorkelling. You will visit a giant tortoise breeding centre and see amazing landscapes including a blowhole, lava floes and volcanic islands and spot a range of wildlife such as blue-footed boobies, albatross, sea lions and marine iguanas.

## ITINERARY

Ecuador, Galapagos Islands,  
South America





# GALAPAGOS ISLANDS - SOUTH & CENTRAL ISLANDS CRUISE | GALAPAGOS ANGEL

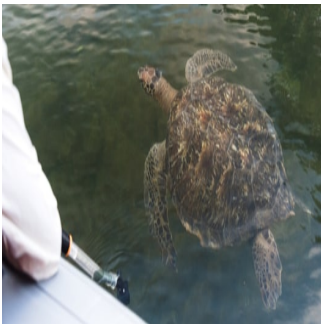
## DAY 3: Santa Fe & South Plaza Island

This morning's excursion takes you to Santa Fe Island (Barrington), renowned for its charming bay and anchorage nestled along the island's northeast coast. Upon arrival, you'll have the opportunity to explore two distinct visitor trails. One trail leads to a captivating viewpoint atop a cliff, offering panoramic vistas of the surrounding landscape. The other trail meanders from a serene beach to a dense forest of towering prickly pear cacti. In the afternoon, your journey continues to South Plaza Island, a picturesque enclave characterized by its dramatic cliffs and rugged terrain. Formed by ancient lava flows, the island is now adorned with sprawling Opuntia cacti, lending it a surreal ambiance. South Plaza is home to a thriving colony of sea lions, which can often be observed basking along the rocky shoreline. Additionally, the island boasts vibrant populations of yellow and red land iguanas, adding a splash of color to the arid landscape. Among the island's distinctive flora, the Sesuvium stands out, displaying varying hues of green and yellow during the rainy season and transforming into a vivid red spectacle during the dry season, from June to January.



## DAY 4: Black Turtle Cove & Bachas Beach

Today's itinerary includes a visit to Black Turtle Cove, nestled in the northern reaches of Santa Cruz. This secluded inlet, ensconced by mangroves, offers a serene haven for burgeoning marine life. Accessible only by dinghy, the tranquil waters of the cove teem with activity, providing sightings of black-tip and white-tip reef sharks, graceful sea turtles, and an array of majestic rays. Later in the day, you'll venture to Bachas Beach, situated on the north shore of Santa Cruz. This stretch of coastline beckons with its inviting waters, ideal for a leisurely swim. A vestige of the U.S. World War II presence in the Galapagos, a floating pier still stands as a testament to history's imprint on the island. Amidst the scenic backdrop, keep an eye out for the vibrant hues of flamingos, the scuttling dance of Sally Lightfoot crabs, and the elusive presence of hermit crabs. Along the shoreline, sightings of black-necked stilts and whimbrels further enrich the coastal landscape. Notably, Bachas Beach serves as a vital nesting ground for sea turtles, adding to the area's ecological significance.



### TRIP CODE

ECGGA5C

### DEPARTURE

Selected Sundays

### DURATION

5 Days

### LOCATIONS

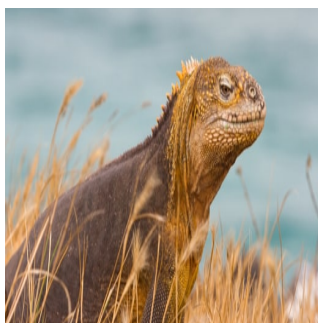
Ecuador, Galapagos Islands, South America



**GALAPAGOS ISLANDS - SOUTH & CENTRAL ISLANDS CRUISE | GALAPAGOS ANGEL**

## DAY 5: Dragon Hill & Departure

On this last day of your journey you will visit Dragon Hill. Situated on Santa Cruz Island, Dragon Hill is one of the newest visitor sites accessible to tourists in the Galapagos Islands. One of the lengthier Galapagos walking trails will lead visitors along a beach and up a trail to the lagoon lookout where bright flamingos, pintail ducks, and land iguanas can be spotted. After this final visit, you will be transferred to the Baltra airport in time for your flight back to the mainland.



## INCLUSIONS & DETAILS

Accommodation	Cabin on board a ship	
Inclusions	<b>INCLUSIONS</b> All meals and excursions while onboard the ship Transfers in the islands Bilingual National Park Guide Use of snorkelling equipment/wetsuit Use of underwater camera Free Airport Assistance* Hotel night in Quito or Guayaquil (the day before the cruise)* Free transfer one way to Galapagos Flights* *Applies only when purchasing roundtrip Galapagos/mainland airfare from the cruise operator	
	<b>EXCLUSIONS</b> Roundtrip airfare to/from Galapagos Alcoholic drinks Galapagos National Park Entrance fee (US\$200 per person from Aug 2024 - Subject to change) Galapagos Transit Control Card (USD\$20 per person - Subject to change) Travel/Medical insurance Gratuities Personal Expenses	
	Difficulty Rating	2 (light adventure)
	Single Surcharge	A single supplement surcharge applies and is subject to availability. Please contact us for more information.

## TRIP CODE

ECGGA5C

## DEPARTURE

## Selected Sundays

### DURATION

5 Days

## LOCATIONS

Ecuador, Galapagos Islands,  
South America



